



6 hours Intensive Hands-on Course

Counterfeits:

= 10% of all global goods

Cost industry up to \$500 B annually

Impact 750,000 USA jobs annually

Decrease customer satisfaction & acceptance

Increase costs for legitimate manufacturers, distributors and brokers

Reduce yields

Increase field failures

Necessitate product inspection

Prompt litigation

Cause injury

Take down high-value systems

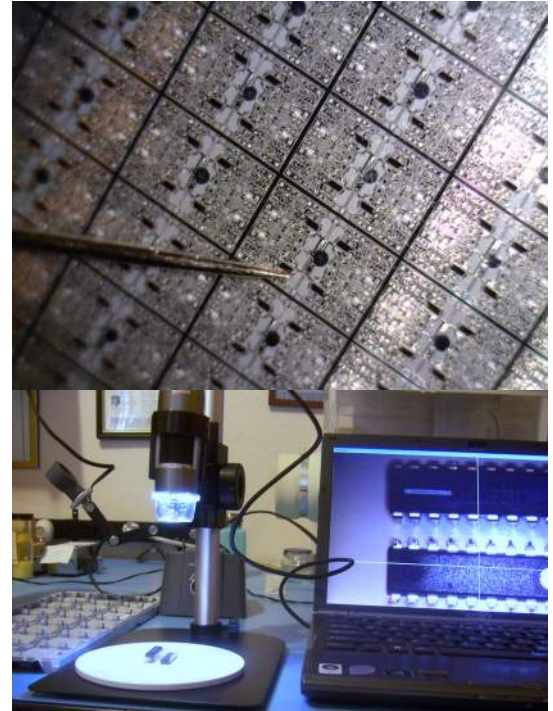
Increase risk

Suspect counterfeiting extends beyond the parts identification process. Over the past several years, U.S. based organizations have sacrificed the traditional "internal auditing process" with too much reliance upon offshore contract manufacturers, distributors and suppliers to do the right thing. To compound the problem, organizations are accepting supplier specifications as adequate proof in utilizing a product for use. The inspection of sensitive parts is very important, but without special safeguards, the additional handling to remove and repack the product for validation can cause both physical and ESD damage in the process. For parts, including those not sensitive to static electricity, measures must be utilized to detect, inspect and validate the packaging as well as incoming parts.

Preventative protection measures against suspect counterfeiting during transport for electronic circuit cards and ESD sensitive devices must be considered. Dog food, medical products, jewelry, consumer goods and other items have made the news. Leadership in clearly defining an *Anti-Counterfeiting Roadmap* must be driven down by the customer! In my opinion, distributor practices must be subjected to physical audits of packaging materials, *not just processes*, to insure supplier conformance. Most of the distributors do not have the necessary skill sets to bring innovative methods to the table; consequently, the user must define requirements and physically audit the supply chain.

Instructors include:

Bob Vermillion, CPP/Fellow Certified, ESD Engineer-iNARTE
RMV Technology Group, LLC



Reclaimed or obsolete parts can work their way onto the production floor.

Who should attend?

Engineers & technicians, quality assurance, procurement and supply chain management professionals who buy components from systems integrators, manufacturers, distributors and brokers

15 December 2009,
Loyola Marymount
University, LA
3 Credit Hours
Contact:

renee@esdrmv.com